

# Interpreter

A Publication of Sugarloaf:  
The North Shore Stewardship Association  
Member Supported  
www.sugarloafnorthshore.org

## Exploring Sugarloaf: New Summer Naturalist Programs at Sugarloaf Cove

Alexis Berke-Hutchins,  
Sugarloaf Cove Naturalist



As we approached the beach I glanced at my watch and realized that it had taken over an hour to cover the half mile distance of the southern portion of the trail. When we were walking we kept a good pace, but we were easily distracted by the colorful blooms alongside the trail. I was with a Sugarloaf member and her family visiting from California. We were on a wildflower hike, eager to see what was on display for us on this June day. This was the first day that I found a Spotted Coralroot off the path. This plant contains no chlorophyll and therefore does not use the sun to make its energy. (I am so fascinated by plants that can live this way.) As we crept along and tried to identify each plant we found, I realized that even in the last couple of days there were new flowers that I was not familiar with. This is one of the joys of being a naturalist at a place like Sugarloaf. No matter how many times I hike the trail there is always something new to discover.

This hike was part of the Sugarloaf *Summer Sensations* Naturalist Program lineup. Every day we offered a program for visitors and residents to enjoy. The topics included, North Shore Geology, a Not-so-early Bird Hike, Animal Signs, Lake Superior Facts, and North Shore Flora. This was the first year Sugarloaf has offered such a constant schedule of programs. I would venture to say it was success. There were days when I could have a full house of 12+ for a program, and days when a lucky few would get a personal tour of the grounds.

As we look forward to next summer, there is much to consider. What program topics should we offer? What days and times are attractive to visitors? We will continue, as always, to create a schedule of Saturday Speakers, still our biggest draw for programs. *Summer Sensations* offers a wonderful opportunity for Sugarloaf to establish itself as a place where not only can you stop to linger on the beach, but also a place that is known for quality educational programs. I look forward to many more explorations of the trail next summer. Watch for upcoming programming and join me at Sugarloaf Cove.

SUGARLOAF'S VISION  
is a healthy Minnesota  
North Shore of Lake  
Superior where an  
informed citizenry  
takes personal and  
group responsibility  
to ensure that natural  
and ecological  
systems and human  
economic and social  
systems coexist in a  
fashion sustainable  
into the future.

*Do you have a topic to suggest for a weekly program?*

*What questions do you have about the North Shore that you would like answered by a class?*

*E-mail your ideas to*  
**alexis@sugarloafnorthshore.org**

## Sugarloaf:

THE NORTH SHORE  
STEWARDSHIP ASSOCIATION

### BOARD OF DIRECTORS

President

Bill Miller, *Duluth*

First Vice-President

Allison Eklund, *Roseville*

Second Vice-President

John Paulson, *Duluth*

Secretary

Margit Berg, *Minneapolis*

Treasurer

Jerry Meigs, *St. Paul*

Tom Becken, *Lake Elmo*

Mike Kennedy, *Two Harbors*

Dave Carlson, *Little Marais*,

Skip Lamb, *Schroeder*

Barb Liukkonen, *Mounds View*

Jim Mullin, *Minneapolis*

Andrea Peterson, *Grand Marais*

Jennifer Smith, *Duluth*

Joe Stasney, *Schroeder*

David Vose, *Duluth*

### BUSINESS OFFICE INFORMATION

6008 London Road

Duluth, MN 55804

Phone: 218-525-0001

Fax: 866-534-9182

Email: [sugarloaf@boreal.org](mailto:sugarloaf@boreal.org)

Website:

[www.sugarloafnorthshore.org](http://www.sugarloafnorthshore.org)

### SUGARLOAF COVE INFORMATION

9096 Highway 61

PO Box 63

Schroeder, MN 55613

218-663-7679

# Nature Cart reaches over 6500 people!

*Chelsea Hatzenbuhler, Nature Cart Educator*

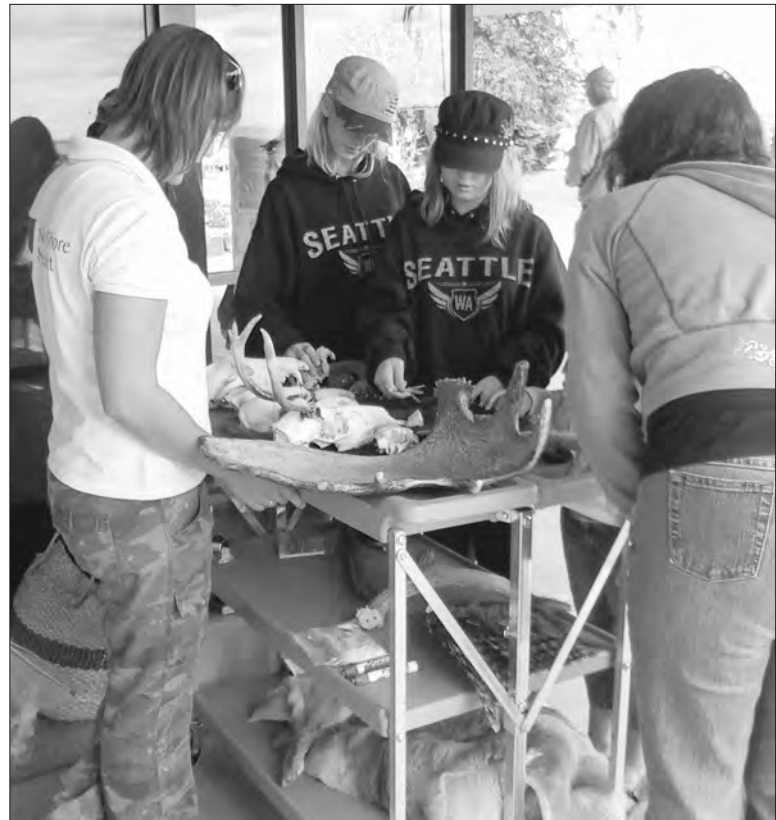
Sugarloaf's Learning Cart was back with a new name for 2009 – The Nature Cart – but staffed by a familiar face, Chelsea Hatzenbuhler. Chelsea took her experiences from last year and made the cart even more popular this year, talking to over 6500 people. This summer the Nature Cart focused on the natural history of Minnesota's North Shore and the geologic history of Lake Superior and the surrounding region. The interest level of both children and adults was very high. These topics made it much easier to engage people and keep their attention for an extended period.

Four years ago, Sugarloaf realized that this program and other programs like this were needed in state parks and other tourist sites along the North Shore, due to a lack of interpretive centers and nature education programs. Although some people may not realize it, when they visit a state park or other natural area, they naturally seek more information about the area and programs like the nature cart provide this information.

Another great aspect of the nature cart is flexibility. Families are free to come and go as they please. There is no obligation for them to be on time or stay throughout the whole program. Questions are answered throughout the presentation. And, based on comments from cart visitors, people leave the program more

knowledgeable about Lake Superior and the surrounding environment.

The Lloyd K. Johnson Foundation provided major funding for the Nature Cart this summer. Sugarloaf also received funding from Grand Superior Lodge to provide guided nature walks and campfires for the lodge guests. Chelsea offered interpretive hikes on trails near the Lodge and on one night a week she



*Nature Cart educator, Chelsea Hatzenbuhler, at the Marine Museum in Canal Park, Duluth.*

presented a campfire program. Campfire topics included Lake Superior facts, geology and mammals of the North Shore.

The Nature Cart has proven to be a great way of educating visitors about the North Shore and promoting Sugarloaf's mission of inspiring the preservation and restoration of the North Shore environment through education and stewardship.

# A new way to support to Sugarloaf – GiveMN.org

As you are well aware, 2009 has been a year of financial belt tightening for individuals and many nonprofits, including Sugarloaf. Support from our members, no matter what the amount, has been greatly appreciated. Now, more than ever, your financial support is especially important as we strive to increase Sugarloaf's stewardship and education efforts along the North Shore, while continuing to maintain Sugarloaf Cove, your own quiet place on the North Shore.

To make supporting Sugarloaf even easier, Sugarloaf is excited to be participating in GiveMN.org, the first-of-its-kind online giving portal. GiveMN.org will provide donors with information about Minnesota organizations that match their philanthropic goals, such as Sugarloaf, and will allow users to easily track their donations in a single online location.

The Minnesota Community Foundation and other key nonprofit leaders in Minnesota created GiveMN to take advantage of the many benefits offered by online giving for both donors and nonprofits. While the median nonprofit raises less than 1 percent of its funds online today, e-philanthropy is far less expensive for nonprofits than traditional fundraising methods, such as direct mail or grant writing.

Please consider donating to Sugarloaf through this new website. Help Sugarloaf make a difference along the beautiful North Shore! Visit [www.giveMN.org](http://www.giveMN.org) and enter sugarloaf in the search box or visit [www.sugarloafnorthshore.org](http://www.sugarloafnorthshore.org) and click on the GiveMN logo.

**Make an even bigger difference with your donation on November 17 & 18.**

If you receive this newsletter before November 17, mark your calendars for *Give to the Max Day* on November 17 from 8:00 am until 8:00 pm on November 18, 2009. When you make a donation to Sugarloaf: The North Shore Stewardship Association on those days using

[www.giveMN.org](http://www.giveMN.org), it will be matched 50% by three Minnesota Foundations.

## What is Give to the Max Day?

*Give to the Max Day* is a giving stimulus plan created to increase giving to nonprofits across Minnesota on November 17, 2009. The goal is to raise as much money as possible for Minnesota charities, including Sugarloaf, in 24 hours. The Saint Paul Foundation, Minneapolis Foundation and Bush Foundation have



committed \$500,000 in matching contributions to support community needs in Minnesota and to cover transaction fees so that 100% of all donations go to the nonprofit organizations. Individual contributions are eligible to be matched .50 cents to the \$1.00 up to a maximum of \$2,500 per transaction on the first \$1 million dollars donated on GiveMN. Visit [www.giveMN.org](http://www.giveMN.org) to donate.

### *Do we have your email address?*

Sugarloaf would like to be able to email you program updates and other opportunities. This saves on postage and allows us to send you more timely information. We will not share your email address with others and we will limit the number of emails we send.

To sign up for email updates, please call 218-525-0001 or email [molly@sugarloafnorthshore.org](mailto:molly@sugarloafnorthshore.org).

## 17th Annual Membership Meeting – Birds of Prey and Ice Cream – two great things, one great place.

On August 15, over 70 people gathered at Sugarloaf Cove for the 17th annual membership meeting. It was a beautiful day at the Cove and the building was filled with smiling faces, both young and old.

The afternoon began with Sugarloaf status reports from Bill Miller, board president and Molly Thompson, Executive Director. Bill described another successful year for Sugarloaf and encouraged everyone to continue supporting the organization.

Molly described the educational programs presented by naturalist Alexis Berke at Sugarloaf Cove this summer. She also described the trail improvements completed by three Minnesota Conservation Corps crews and the plan to build steps on the trail leading from the building to the Cove. Molly mentioned the Nature Cart program and its success this summer and Sugarloaf's involvement in the Cook County Invasives Team.

Bill then thanked the outgoing board members and expressed gratitude for their years of service to the organization. Bill introduced treasurer Jerry Meigs who reported on the nominating committee's slate of nominees for the 2009-2010 Board of Directors. Nominated to serve another three-year term were current members Margit Berg, Allison Eklund, Mike Kennedy, and Andrea Peterson. New nominations for a three-year term to the Board were David Vose, Barb Liukkonen

and Tom Becken. President Miller called for additional nominations. Hearing none, the membership cast a unanimous ballot for those presented by the Nominating Committee.

The meeting adjourned at 2:30 p.m. and everyone enjoyed ice cream sundaes and a fabulous presentation about raptors by Peter Harris from Wolf Ridge Environmental Learning Center.



*Peter Harris presents a Great Horned Owl to an enraptured audience.*



## Sugarloaf Board of Directors Update

After seventeen years as a Sugarloaf Director, John Green decided to decline serving another director term. John was a charter member of the board and as a renowned geologist and naturalist, his contributions were innumerable. In 1987, John nominated Sugarloaf Cove for designation as a Scientific and Natural Area. Throughout the years, he led many field trips, served on the site management committee, mapped and taught about the geology of Sugarloaf Cove, and was a gentle reminder of the mission of Sugarloaf, keeping the organization on track. John will be greatly missed as a board member, but has agreed to continue serving on the site management committee. Thank you John for all you have done and continue to do for Sugarloaf!

During the past year, there have been three resignations from the Sugarloaf board, Pat Maus, Karen Stromme, and Rick Novitsky.

Pat served for 13 years and organized Sugarloaf's historic records. Like John, she was part of Sugarloaf since its beginning, working behind the scenes, providing encouragement and support to staff and the board. Thanks Pat!

Karen served for 4 years and her skills as a manager were very helpful.

Rick was a director for 1 year. He was unable to continue as a board member due to the increased duties of his job as the Grand Portage State Park manager.

Thanks to all of them for their time and talents.

### Sugarloaf welcomed the following new board members at our annual meeting in August:

#### *David Vose*

David is a long-time resident of Duluth having retired from the University of Minnesota Duluth in 2002 following 36 years of service at the University. During that period, he served as a



faculty member in the Department of Economics, as Dean of the School of Business and Economics for 15 years and as Vice Provost for Academic Administration for 7 years.

#### *Tom Becken*

Tom has deep ties to the North Shore having vacationed and visited relatives here since childhood. He and his wife, Kay, built a home about 1 mile east of Sugarloaf Cove about ten years ago. Tom, CEO of Cemstone, wants to

ensure that the North Shore, and particularly Sugarloaf Cove, continue to be a precious resource to his children and grandchildren.

#### *Barb Liukkonen*

Barb was a Board member on the original Sugarloaf Board beginning in 1992 and served for 12 years, including a 3-year term as president



from 1999-2002. She and her husband, Bob, own property in Lake County and plan to retire there in a few years. Barb's background is in hydrogeology and she worked for the

University of Minnesota Extension on water quality and drinking water issues for 25 years.

# News and Notes

## Tombolo Award presented to Steve Pihlaja

Sugarloaf presented their highest honor posthumously to Steven A. Pihlaja at the annual membership meeting. The Tombola Award is presented to persons who have contributed significantly to our mission of protecting and restoring the North Shore. Steve was a founding member of Sugarloaf Interpretive Center Association and served as an officer and chair on many committees. Steve and his wife Lorrie drew up the documents, pro-bono, needed for



Board President Bill Miller (left) presents the Tombolo award to Barb Liukkonen (center) who accepts the award on behalf of Steve Pihlaja's family. Also pictured, outgoing board member John Green.

Sugarloaf to emerge as an organization. Over the years, he served as a guiding force on the board and his presence is greatly missed.

## Sugarloaf Cove featured on Fox21

This summer, Fox 21 News Duluth ran a story about Sugarloaf Cove as part of their Small Towns feature. The weather was wonderful and the reporter and videographer did a terrific job. You can view it on Sugarloaf's Facebook page, or on our website, [www.sugarloafnorthshore.org](http://www.sugarloafnorthshore.org).

## New Sugarloaf Cove Entrance Sign

Sugarloaf Cove has a beautiful new entrance sign. For the past five years, Sugarloaf has been working with the North Shore Scenic Drive Council on the development of six cairn signs along Highway 61. The cairn signs are way-finding tools for the visiting public and represent the thread that ties communities together along the North Shore Scenic Drive All-American Road.

The distinctive signs were made possible through a National Scenic Byways Program grant with a local match from each community. Sugarloaf's matching funds were from the Cook County Community Fund. We were the only non-municipality included in the project.

Unfortunately, our sign is 100 feet from the road due to Minnesota Department of



New entrance sign at Sugarloaf Cove

Transportation (MNDOT) right-of-way restrictions. As noted by many visitors, the sign is not visible from Highway 61. Sugarloaf is working with MNDOT to find a way to have the sign moved closer to the road, hopefully by next summer.



One of the MCC crews that placed gravel along our trail.

## Trail Improvements

This summer, three Minnesota Conservation Corps (MCC) crews spent many hours hauling gravel from the parking lot to the trail, covering tripping hazards such as rocks and roots. Funding from the Minnesota Power Foundation paid for the gravel. Skip Lamb donated the gravel hauling services and MCC donated two weeks worth of work crews. Thanks to all of them, the trail is much safer.

## Sugarloaf receives grant from Donald Weesner Foundation

The Donald Weesner Foundation has awarded Sugarloaf a grant of \$10,000 for trail improvements at Sugarloaf Cove. Sugarloaf plans to use the money to make the trail from the building to the Cove much safer by building steps along the steepest part of the trail. Volunteers and a Minnesota Conservation Corps crew will help with the building of the steps next summer.

## A Special Thanks to our

# SPRING PLANTING DONORS 2009

This year we received over \$4900 from 74 donors through our Spring Planting campaign. Donor names will be displayed on a plaque at Sugarloaf Cove. We really appreciate your support of Sugarloaf's reforestation and education efforts.



Mary and Feudor Aijala  
Tim Wilson and Amy Andersen  
Julian and Jamie Andersen  
Anonymous  
Mary Kay Arthur  
Greg and Anne Bartel  
Shirley and Roland Bosch  
Gary Carlson  
Sue and Ray Churack  
Michele Connelly  
Patricia Coppo  
Kathleen A. Dahl  
Dorothy Dalquist  
David and Mary DeGree  
Jenny Delfs  
Paul Diethelm  
John Dolmar  
Lawrence and Ann Downing  
Paul Engh  
Bridget Enke  
Cheryl Erickson  
Marv Fabyanske  
Carl and Carol Fritsch  
James Garrison  
Dick and Nancy Gongoll  
John and Jan Green

Tom Hemstreet  
John and Julie Henriksson  
David and Mary Herr  
Wayne and Nora Hornicek  
Margaret Hunt  
Maland and JoEllen Hurr  
Nancy Johnson  
Martin and Esther Kellogg  
Patricia Kriesel  
Lake Superior Trading Post  
Dick and Karen Lane  
Jacqueline Larsen -  
White Pine North  
Edward and Joanie Lee  
Allen and Kathleen Lenzmeier  
Barb Liukkonen  
Alonah & Donn Lorenz  
Steven Lukas  
Mark and Tammy Magney  
Thomas and Barbara McBurney  
Margaret Meier  
Jerry Meigs  
Lee Menssen  
Mary and Todd Miller  
William K. Miller  
Robert Minish

Jim and Fran Mullin  
Mike and Susan Nordin  
Gloria L. Noren  
Meredith Cornett and  
Ethan Perry  
Dave and Andrea Peterson  
Terri Port Wright  
Nancy Rodning  
Teresa Root  
Dale and Marilyn Simmons  
Gloria Smith  
Susan and Stephen Stedman  
Stonegate on Superior  
June Calin Storms  
Glen and Betsy Swanson  
Robert and Pat Tammen  
Dick and Mary Jo Tein  
Diane Tessari  
Bonnie Thomsen  
Mary Volk  
John and Linda Walker  
Ken and Donna Wielinski  
Barb and William Wood  
Dode Wonson  
Ken and Sharon Wyberg

## Thank you, VOLUNTEERS!

The board and staff of Sugarloaf extend a big thank you to all of our volunteers. We would especially like to thank the following people:

*Site hosts* – Aletha Bartels, Glen and Donna Hambleton, Lisa Hemp, Lucille Markus, Joyce Yamamoto

*Membership data management* – Jon Farchmin

*Summer Solstice party hosts* – Scott and Jan Ellingson

*Graphic design services* – Wendy Strombeck

*Educators* – Cindy Edwardson, Lisa Hemp, Roxie O'Hearn, Jane Watrus

*Sugarloaf Cove site maintenance* – Terry Baird, Greg Bartel, Gerald Bartels, Tom Berg, Chuck and Linda Morris

*North Shore Visitor Center hosts* – Jon Farchmin, Gary Meier

If you are interested in volunteering, please contact Molly at 218-525-0001 or [molly@sugarloafnorthshore.org](mailto:molly@sugarloafnorthshore.org)

## CURRENT AND RECENT FUNDERS AND DONORS:

*Elmer L. and Eleanor J. Andersen Foundation* – general operating support

*The Athwin Foundation* – general operating support

*Tom and Kay Becken* – Capital improvement fund

*Integrated Compensation Systems, Inc.* – payroll-processing services

*Lloyd K. Johnson Foundation* – programs at the Cove and the Learning Cart

*Lake Superior Coastal Program* – Virtual Visitor web site project funding and Sugarloaf Summer Sensations program funding

*Skip Lamb* – gravel hauling services

*Minnesota Conservation Corps Crews* – site work

*Minnesota Power Foundation* – trail improvements at the Cove

*Carl and Verna Schmidt Foundation* – general operating support

*Donald Weesner Foundation* – trail upgrades at the Cove

*Wolf Ridge Environmental Learning Center* – program support

*Sugarloaf members*

Sugarloaf: The North Shore Stewardship Association  
6008 London Road  
Duluth, MN 55804

NON-PROFIT ORG.  
U.S. POSTAGE  
**PAID**  
PERMIT NO. 721  
DULUTH, MN

## UPCOMING EVENTS

DECEMBER 12

Surviving the Cold, 10 am

JANUARY 9

Winter Tree Identification, 10 am

FEBRUARY 13

Snowshoe Hike, 10 am

MARCH 13

Winter Birds, 10 am

APRIL 10

Harbingers of Spring, 10 am

Address Service Requested

*The Sugarloaf Interpreter is published by Sugarloaf: The North Shore Stewardship Association. Submissions welcome. Send to [molly@sugarloafnorthshore.org](mailto:molly@sugarloafnorthshore.org). Single copies available on request. Designer: Wendy Strombeck.*

*Annual memberships are tax deductible. Please make checks payable to Sugarloaf, and mail to the business office at 6008 London Road, Duluth, MN 55804. Memberships are also available through the website at [www.sugarloafnorthshore.org](http://www.sugarloafnorthshore.org). Sugarloaf is an educational, non-profit 501(c)(3) Minnesota Corporation.*

**membership**  
APPLICATION

Please enroll me as a member of Sugarloaf in the category I have indicated.

NAME

ADDRESS

CITY

STATE

ZIP

PHONE

E-MAIL

### MEMBERSHIP CATEGORIES

- \$ 25 Contributing  
 \$ 50 Supporting  
 \$ 100 Sustaining  
 \$ 250 Sponsor  
 \$ 500 Patron  
 \$ 1000 Benefactor  
 \$ \_\_\_\_\_ Other

New  Renew

SUGARLOAF  
6008 London Road  
Duluth, MN 55804  
[molly@sugarloafnorthshore.org](mailto:molly@sugarloafnorthshore.org)

THANK YOU!